

Hanseath Tourism Development – Palmview

FAST FACTS

JUNE 2019

Site location

Bruce Highway,
Palmview

Site size

49.1
hectares

Habitat retention

Approx. 23 hectares inc.
Environmental Conservation
Area & Wetland/Riparian
Vegetation Corridor

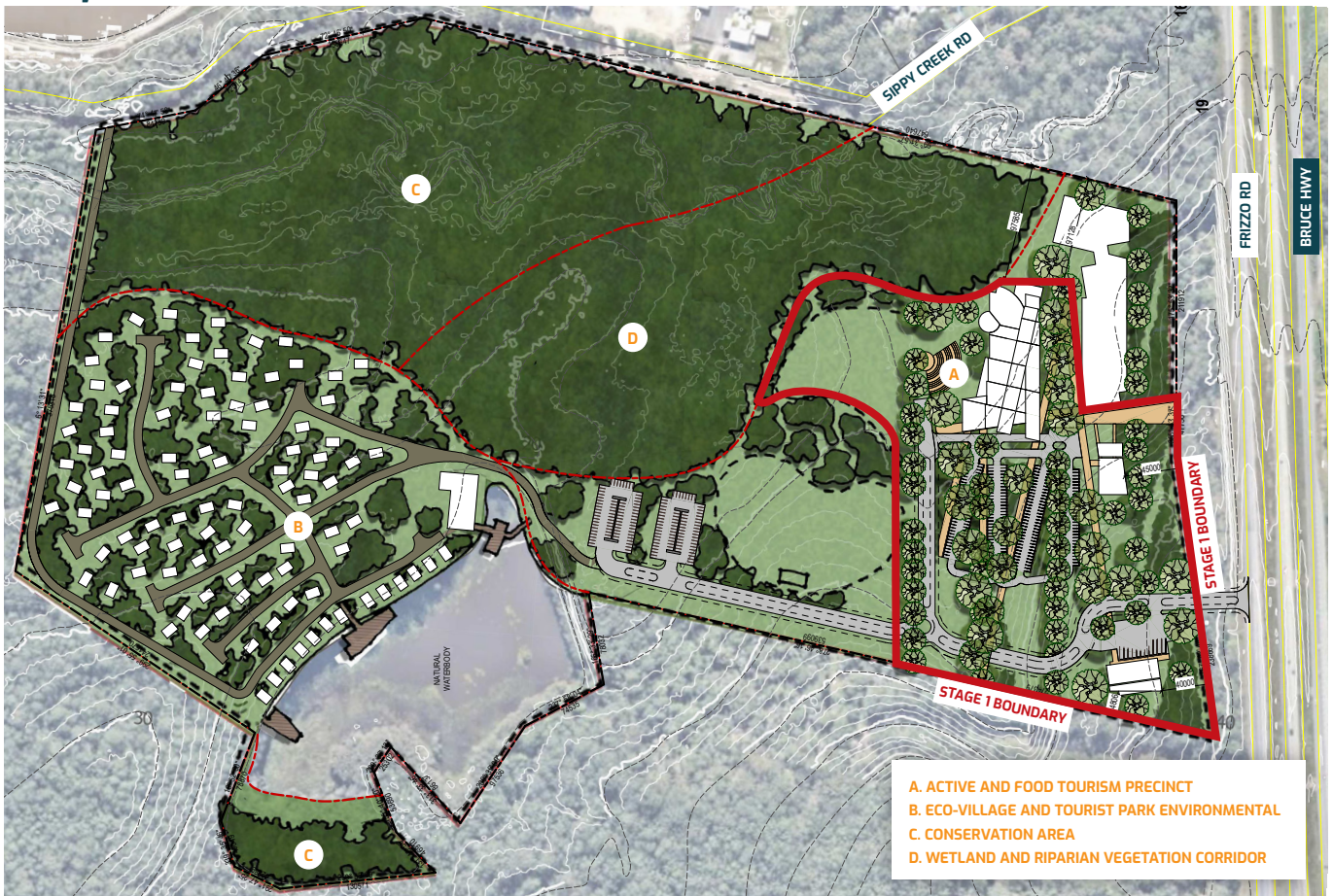
Project value

The total economic output
from the Palmview project
is estimated at \$94.5m in
year 5

Job creation

380 equivalent full time construction jobs
570 equivalent full time operational jobs
and an additional 190 jobs throughout the
broader community

Project OVERVIEW



The Hanseath Tourism Development is set amongst the outstanding natural landscapes of the Sunshine Coast Hinterland and will provide a world-class facility catering to the emerging wellness and 'experience' tourism markets.

The mixed-use tourism facility will include:

- food tourism opportunities that showcase locally grown produce including a brewery and distillery, locally produced native foods, yoghurt, cheeses, honeys, gin, ginger beer and chocolates
- tourist transit depot that connects both visitors and locals to the great sites and activities available across the Sunshine Coast and the region

- leisure and recreation facilities including adventure golf, bike and walking trails, low/high rope courses, zip lines, obstacle courses, indoor skydiving, rock climbing and VR gaming
- an eco-resort providing low impact, high quality accommodation.

Hanseath is committed to creating a precinct that showcases the natural environment by retaining approximately 23 hectares of the site as an environmental conservation area and wetland/riparian vegetation corridor.

It is anticipated that construction will commence as soon as practicable once approval is received from Sunshine Coast Council.

APPROVALS

In June 2019, Hanseath lodged a Development Application with Sunshine Coast Council for a Preliminary Approval to establish the Hanseath Tourism Development Master Plan and a Development Permit for Stage 1 of the development under the Master Plan.

Preliminary APPROVAL

- The Preliminary Approval is proposed over the whole of the site and essentially seeks to establish a Master Plan for uses over the site.
- Uses sought by Preliminary Approval include Tourist Attraction, Food Tourism, Nature-based Tourism, Tourist Park, Tourist Transit Depot, Outdoor Sport and Recreation, Indoor Sport and Recreation, Resort Complex (eco-resort), Short-term accommodation, Function Facility, Food and Drink Outlet, and Shop.
- While a variety of uses are sought, the Preliminary Approval ensures that the overall development will function as an integrated Tourist Facility.
- The development will seek to maintain the ecologically important areas of the site.

Development PERMIT – STAGE 1

- The application also includes a Development Permit for Stage 1 of the development under the Master Plan.
- Stage 1 of the development will include the tourist transit depot, adventure golf, a tourist attraction including food tourism, and car parking.



About HANSEATH

Hanseath Pty Ltd is a Sunshine Coast company based in Maroochydore that has been incorporated specifically to create the Hanseath Tourism Development - Palmview.

Hanseath's Shareholders are long-term residents of the Sunshine Coast and bring together a broad range of business experience.

Contact US

Hanseath is committed to establishing a Precinct that meets the expectations of the Sunshine Coast community and welcomes feedback on the Project.

You can contact Hanseath via email info@hanseath.com.au